

Q: How to set up Tiny Personal Firewall

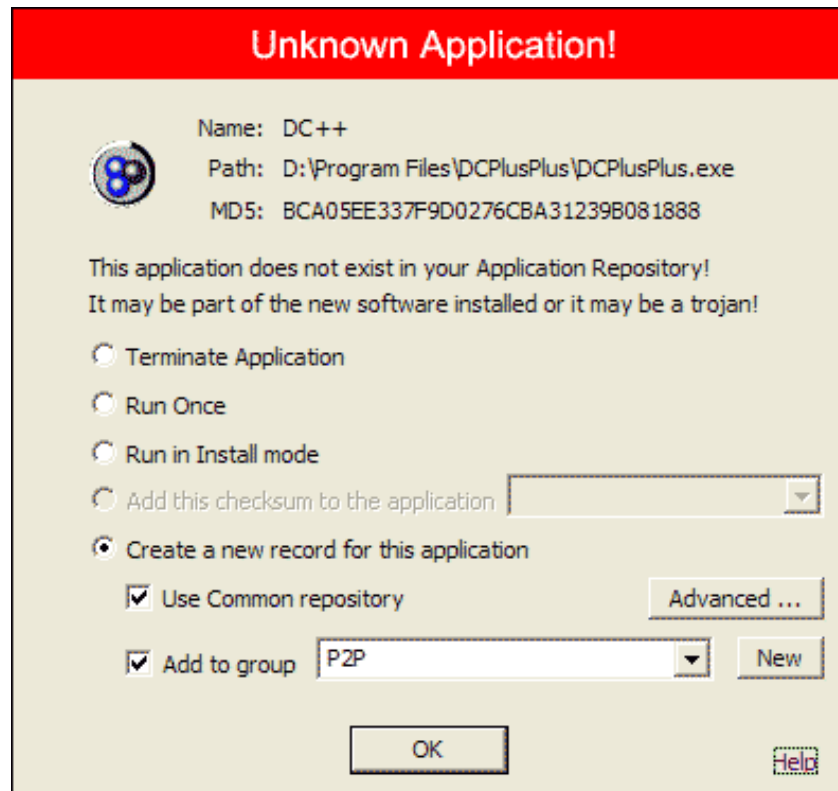
A:

How to set up Tiny Personal Firewall

This was setup using 5.00.1218

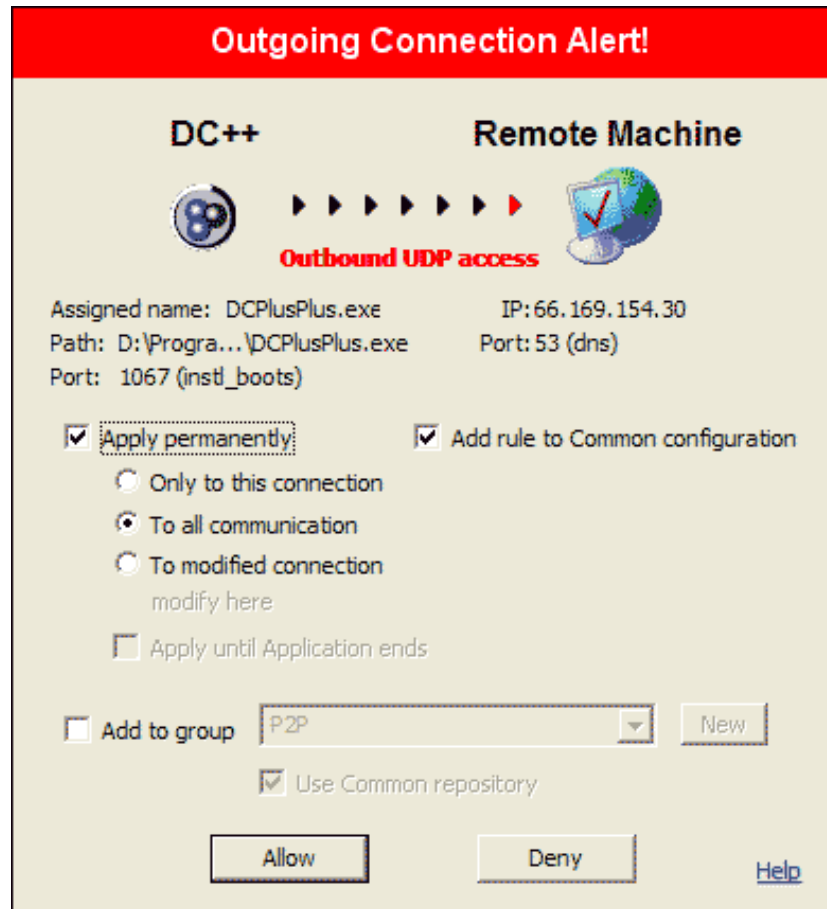
Tiny is a advanced firewall with **many** configuration options and settings. This guide will help you configure DC++ **ONLY**. Its strongly recommended that you read the manual or other guides on the proper way to set up your firewall.

1. Once you get Tiny installed, start up DC++. Immediately, you will be prompted with a dialog like:



* Check *Use common repository*

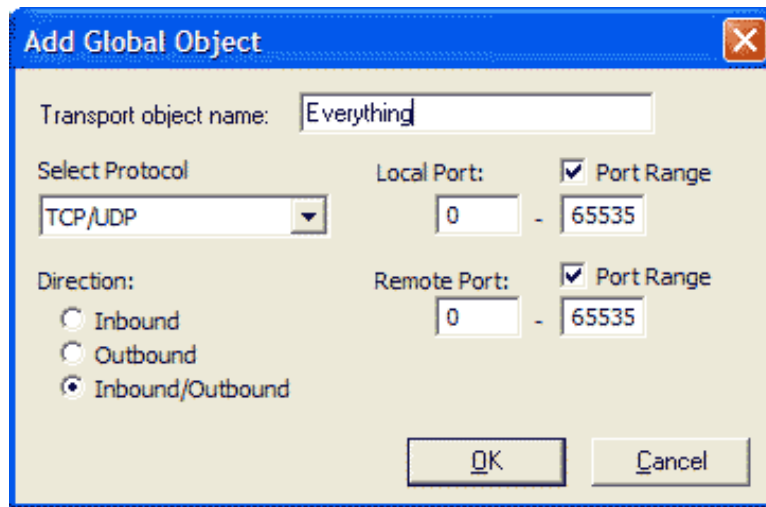
- * Check *Add to group* I created a new group called *P2P*
- Another dialog box will appear:



- * Check *Apply permanently*. Select *To all communication*
- * Check *Add rule to common configuration*
- Several other dialogs with "Outgoing Connection Alert!" from DC++ will be generated. For now until the firewall is fully configured, just close DC++ and hit *apply only to this connection* for any remaining alerts coming from DC++.
 - Open up the Configuration Tool. Go to Network Security -> Protocols and Ports



- Add a new rule.



- * Enter in whatever name you like
 - * Select *TCP/UDP* for the protocol
 - * Select *Inbound/Outbound* for the direction
 - * Both the local and remote port should be a *Port Range* from 0 to 65535.
6. Go to Network Security -> Network Security Rules



7. In the High Priority Common Rules section, find the one pertaining to DCPlusPlus.exe

	Protocols & ports	IP Address	Application
	High Priority Common Rules		
	UDP, Outbound, Local ports: 0-65535, Remote ports: ...	All (*)	amon.exe
	TCP, Outbound, Local ports: 0-65535, Remote ports: ...	All (*)	DCPlusPlus.exe
	Low Priority Common Rules		

8. Click on the line with DCPlusPlus and a drop down box will appear. Select the rule you just created from Protocols and Ports ("*Everything*" in this example)

	Protocols & ports	IP Address	Application
	High Priority Common Rules		
	UDP, Outbound, Local ports: 0-65535, Remote ports: ...	All (*)	amon.exe
	Everything (TCP/UDP, Inbound/Outbound, Local port...	All (*)	DCPlusPlus.exe
	Low Priority Common Rules		

- Delete any remaining rules that have been created regarding **DCPlusPlus**.
9. Click on Save Changes in the **top right corner** of the Configuration Tool.
10. DC++ should now be set up!