

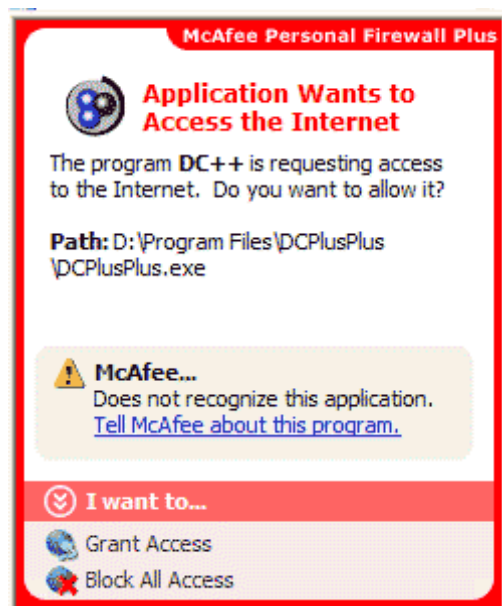
**Q: How to set up McAfee Personal Firewall**

**A:**

## How to set up McAfee Personal Firewall

This was setup using 5.0.1.5 Plus

1. Assuming you have not run DC++ yet, start it up. Along the bottom right side of your monitor you should see a dialog box like the following:



- Click on *Grant Access*
- That's it! DC++ should now be setup.
- If you did not see this dialog box, then make sure your security level for McAfee is either set to *Tight* or *Standard*