

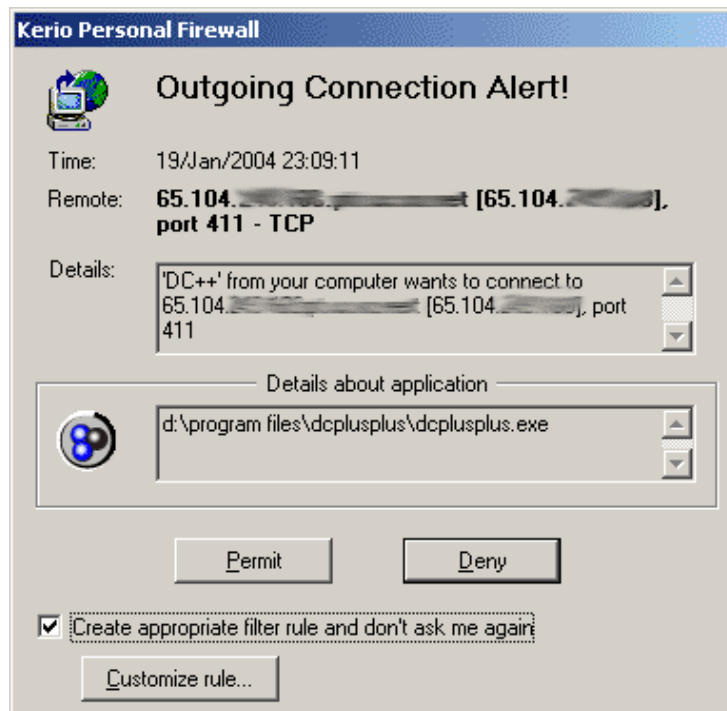
Q: How to set up Kerio Personal Firewall (#8964)

A:

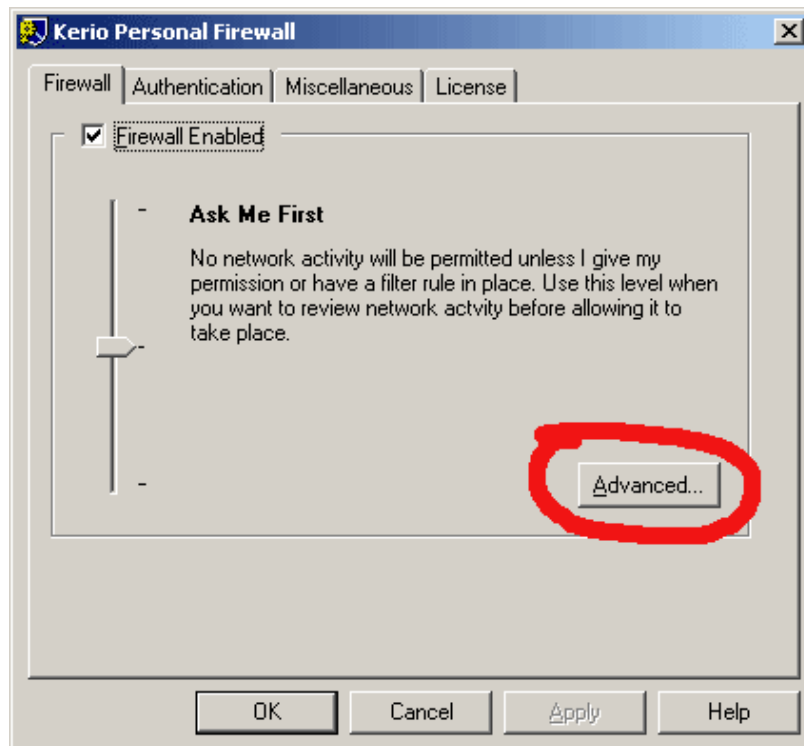
How to set up Kerio Personal Firewall

This was set up using 2.1.5

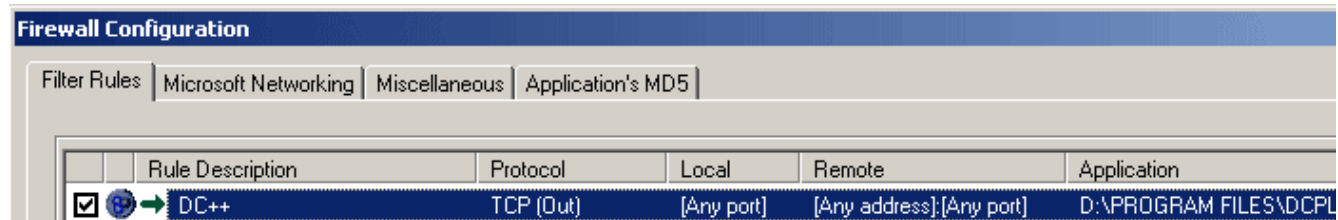
1. After Kerio is installed, start up DC++. Immediately you will see a dialog like the following:



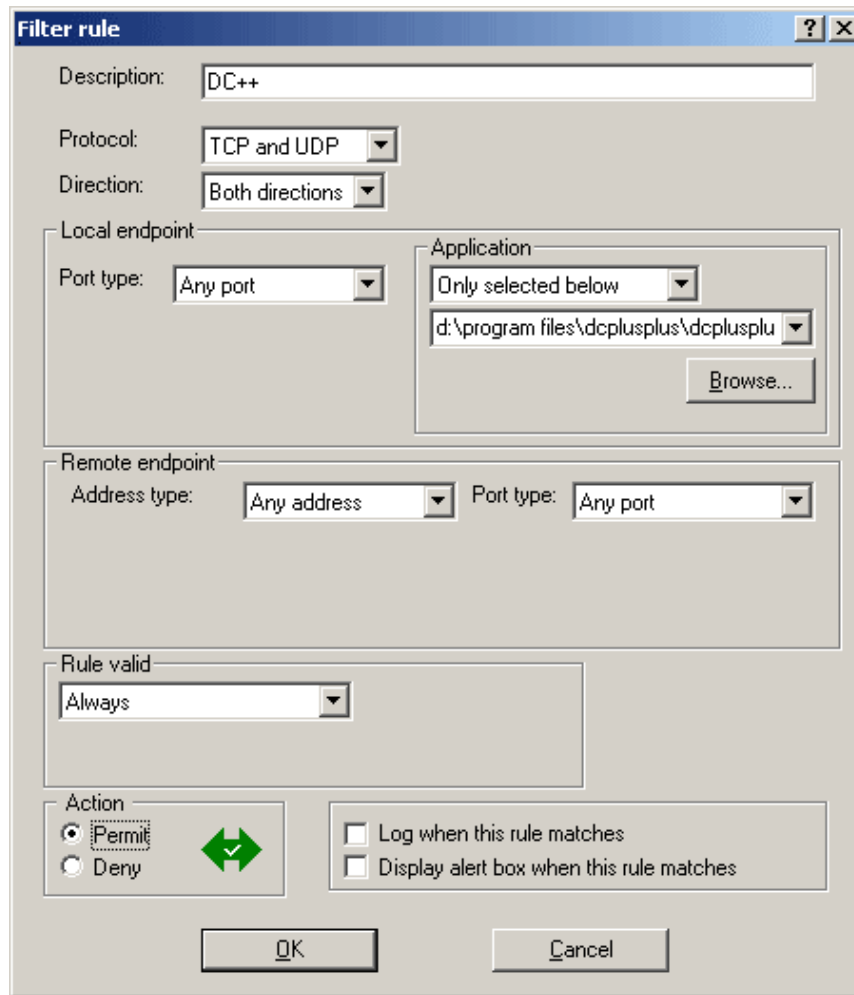
- * Check *Create appropriate filter rule and don't ask me again*
- 2. For now until the firewall is fully configured, **close** DC++. You will receive several other popups, just click on *Permit* until they go away.
- 3. Open up the Firewall Administration program.



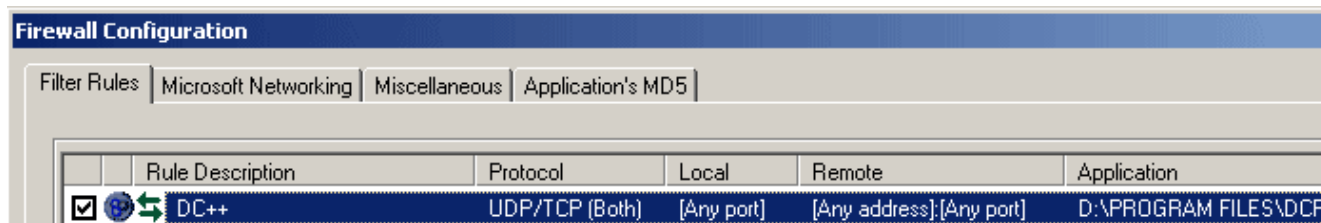
- Click on *Advanced*
4. Scroll down to the bottom of the list of applications. Find DC++



5. Click on *Edit* at the bottom of the screen



- * Change the protocol to *TCP and UDP*
 - * Change the direction to *Both directions*
6. This is what the rule for DC++ should now look like:



7. That's it, DC++ should now be set up!